



**NINGBO SKY MASTER PRECISION  
MACHINERY CO.,LTD.**

Add:No.168 Tanjialing East Road Yuyao,Zhejiang,China  
Tel:+86-574-6276 6276 / 6276 6789  
Fax:+86-574-6276 6999  
E-mail:export@skymaster.com.cn  
www.skymaster.com.cn



**GK WERKZEUGMASCHINEN GMBH**

Add:Lindenstr. 21- 23 Postfach 1210  
D-64589 Stockstadt am Rhein,Germany  
Tel: +49(0)6158-84772  
Fax: +49(0)6158-86931  
www.gkkraft.com



2016.03



**China-Germany  
Investment**

# Contents

01 Company Brief	02
02 Products <small>High Speed Series Vertical Series</small> <small>5-axis Series Double Column Series</small>	04
03 Workshop & Equipment	34
04 R&D, Inspection	36
05 Service	38
06 Automation & Turn-key Project	40
07 Customer Application	41

# 01 Company Brief



## Pursue excellent solution always

SKY MASTER is a China-Germany investment company specialized in designing and manufacturing high quality CNC machine tools under the supervision of Germany partner KRAFT. Our first-rate environment and well development foreground attracts a lot of experts and senior engineers to join in our technical team, both Taiwan research office and Germany R&D team supply the technical supporting, western engineering combined with Asian manufacturing leads us into an advanced synergy effect. We adopt modern management systems to run each process of designing, machining ,assembling and quality checking for an efficient performance .The company get the ISO9001 quality certificate and all machine get the CE certificate from TUV SUD company.

Our professional service team in all over the world keeps close contact with clients and supply technical support at any time. Take "Upright integrity, Excellent operation and High quality "as our management concept to produce each machine with our full heart, we are looking forward in achieving progress with you in the field of CNC machine tool.



# 01.1 Our Partner-KRAFT

GK Werkzeugmaschinen GmbH in Stockstadt am Rhein - Everything you need in one place, Everyone finds what they are looking for at KRAFT

In 1990 Gerhard Kraft founded GK Werkzeugmaschinen GmbH in Stockstadt am Rhein. Company founder Gerhard Kraft brought 25 years of knowledge and experience to the company. Since then, the company has grown into a flourishing enterprise with 10 professional designer who are focusing on CNC machine tool in different area, with 10 additional sales representatives in Germany, Austria and Switzerland for selling and serving KRAFT machine.

KRAFT has the factory with 3000sqm which is near to Rhein river ,it is very close to the Frankfurt airport.



# 02 Products



## High Speed Series

Use our know-how to work out the solutions for your most difficult issues



Temperature & humidity constant workshop

From 2011, Sky Master stepped into the new high-speed series. Based on advanced design concepts and outstanding technological support, Sky Master high-speed machines fill up various gaps in the field of domestic high-speed machines, and can reach up to 1.2 G acceleration and 0.005 mm repeated positioning accuracy.



# High Speed Series

- VF double column high speed high accuracy series is designed for precise mold base and nonferrous metal machining. Standard machine equips with high speed spindle.
- One piece cast iron machine bed and one piece cast iron bridge, the whole structure is analyzed by FEM which optimize the rigidity and accuracy.
- The HEIDENHAIN TNC system comes as standard with 15 inch colored LCD screen, LAC(Load Adaptive Control), Handwheel Superimposing, touch probe cycles, extended programming function, program-verification graphics(Model VF1290 are not included)
- All three axis use European high quality linear guide way and Heidenhain absolute type linear encoder, providing precise accuracy and stable performance.
- Full enclosed splash guard with European operation box in safe and elegant outlook ,every design is for convenience operation.
- The coolant tank is equipped with oil/water separator which can protect the working environment and prolong the life time of coolant.

## VF1615A

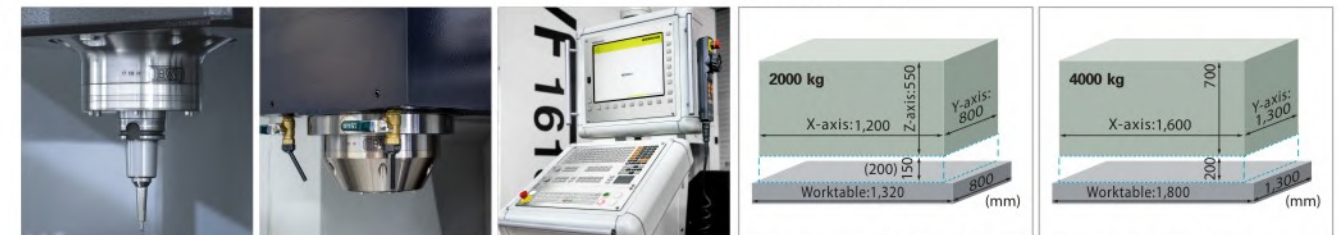


# Technical Parameter

Item	Unit	VF1290	VF1290A	VF1290B	VF1615	VF1615A	VF1615B
Standard controller		FANUC Oi MF		HEIDENHAIN TNC620			
Travel	X axis travel(work-table)	1200			1600		
	Y axis travel(saddle)	800			1300		
	Z axis travel(spindle head)	550			700		
	Distance from spindle nose to table	150 ~ 700	200 ~ 750	200 ~ 900	225 ~ 925	250 ~ 950	
	Distance between columns/work piece access height	920/715			1500/715		
Work table	Table size(length x width)	1320 x 800			1800 x 1300		
	Max. table load	2000			4000		
	T slot size(width x distance x quantity)	14 x 120 x 7			22 x 160 x 8		
Spindle	Spindle taper	HSK-A63		HSK-E50	HSK-A63		HSK-E50
	Max. spindle speed	15000(Direct driven)	24000(Build-in)	36000(Build-in)	15000(Direct driven)	24000(Build-in)	36000(Build-in)
	Spindle motor power (continual working/Max.)	9/15	30/39	20/26	10/17	25/33	20/26
	Spindle torque	57.3/120	29.1/37.8	10.4/13.5	63.7/108.6	72.6/95.8	10.4/13.5
XYZ	Rapid traverse (X/Y/Z)	30000	40000		30000		
	Cutting feed rate (X/Y/Z)	1 ~ 10000		1 ~ 20000			
ATC (Option)	Tool capacity	20		24	20		24
	Max. tool diameter	Ø100/Ø130		Ø80/Ø120	Ø100/Ø130		Ø80/Ø120
	Max. tool length	300		220	300		200
	Max. tool weight	8		4	8		4
Accuracy	VDI/DGQ3441 Full travel positioning accuracy	P0.014					
	Repeatability accuracy	Ps0.008					
Air pressure	MPa	0.6 ~ 0.8					
Supply voltage & frequency		3 /PE, AC380V, 50Hz					
Power requirement	kVA	30					80
Machine size (L/W/H)	mm	4476 x 4790 x 3215			5657 x 5403 x 3954		
Machine weight	kg	12000			22000		

We reserve the right to change technical parameter for improvement of our products without giving notice to customers.

### Moveable Area:

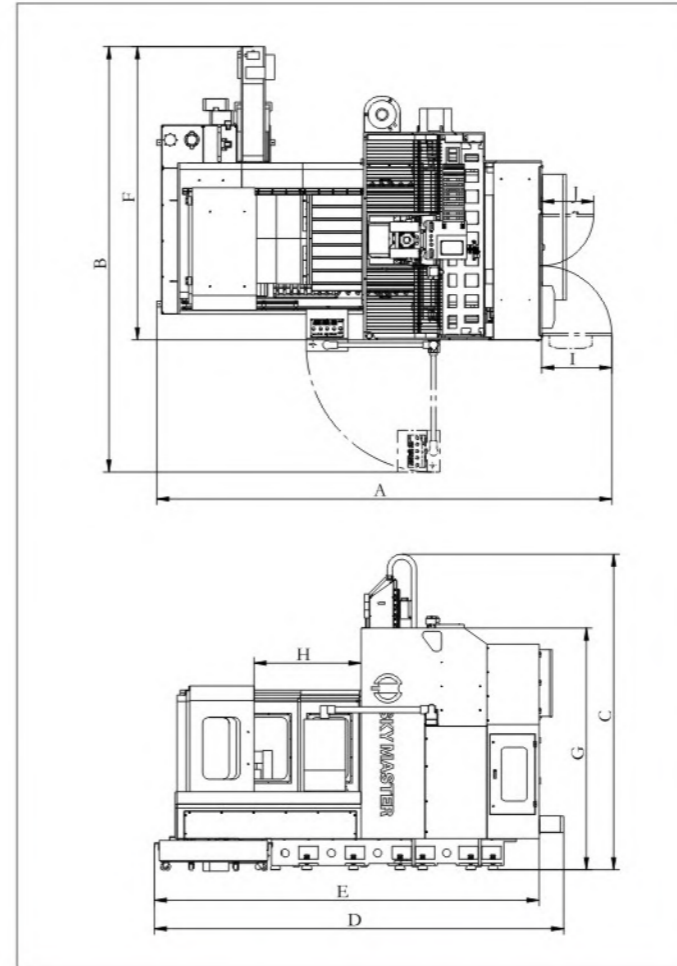


VF1290/1290A/1290B

VF1615/1615A/1615B

Standard&Option	VF68	VF108	VF1290	VF1290A	VF1290B	VF1615	VF1615A	VF1615B
FANUC 0i MF absolute type	●	●	●	×	×	○	×	×
HEIDENHAIN TNC620	×	×	×	●	●	●	●	●
MITSUBISHI M730VM	×	×	×	○	○	○	○	○
Rigid tapping	●	●	●	●	●	●	●	●
Full-enclosed splash guard	●	●	●	●	●	●	●	●
Direct driven spindle 15000rpm HSKA63	●	●	●	×	×	●	×	×
Direct driven spindle 15000rpm BBT40	○	○	○	×	×	○	×	×
Electric spindle 15000rpm HSKA63 INNA	○	○	○	×	×	○	×	×
Electric spindle 24000rpm HSKA63 IBAG	○	○	×	●	×	×	●	×
Electric spindle 36000rpm HSKE50 IBAG	×	×	×	×	●	×	×	●
Spindle air sealing	●	●	●	●	●	●	●	●
Spindle chiller	●	●	●	●	●	●	●	●
Spindle cooling by external pipe	●	●	●	●	●	●	●	●
Air blowing device	●	●	●	●	●	●	●	●
Working area light	●	●	●	●	●	●	●	●
3 colors warning light	●	●	●	●	●	●	●	●
A/C for electric cabinet	●	●	●	●	●	●	●	●
Portable MPG	●	●	●	●	●	●	●	●
Tool coolant system	●	●	●	●	●	●	●	●
Lubrication system/pneumatic system	●	●	●	●	●	●	●	●
Adjustable level bolts and foundation blocks	●	●	●	●	●	●	●	●
Chain chip conveyor	●	●	●	●	●	●	●	●
Coil chip conveyor	×	×	●	●	●	●	●	●
Tool box	●	●	●	●	●	●	●	●
Air gun/water gun with flushing function	●	●	●	●	●	●	●	●
Oil and water separator machine	●	●	●	●	●	●	●	●
Automatically power off	●	●	●	●	●	●	●	●
Operation manual	●	●	●	●	●	●	●	●
Safety door interlock	●	●	●	●	●	●	●	●
Transformer	●	●	●	×	×	×	×	×
Arm type ATC BT40 24T (pneumatic)	○	○	×	×	×	×	×	×
Arm type ATC HSKA63 24T (pneumatic)	○	○	×	×	×	×	×	×
Chain type ATC HSKA63 32T (pneumatic)	×	○	×	×	×	○	○	×
Chain type ATC HSKA63 40T (pneumatic)	×	×	×	×	×	○	○	×
Drum type ATC HSKA63 20T (pneumatic)	×	×	○	○	×	○	○	×
Drum type ATC HSKE50 24T (pneumatic)	×	×	×	×	○	×	×	○
Roof spraying system	○	○	○	○	○	○	○	○
Large flow chip flushing function	○	○	×	×	×	×	×	×
Machining observation window	○	○	○	○	○	○	○	○
Drawer type water tank	○	○	○	○	○	×	×	×
Coolant through spindle center	○	○	○	○	○	○	○	○
3 axes hollow screw cooling	×	×	×	×	×	○	○	○
Grease lubrication device	○	○	○	○	○	○	○	○
Voltage stabilizer	○	○	○	○	○	○	○	○
Heidenhain absolute linear scale	○	○	○	●	●	●	●	●
Measuring system (tool, workpiece)	○	○	○	○	○	○	○	○
Air dryer	○	○	○	●	●	○	●	●
Oil mist recycle machine (LOSMA)	○	○	○	○	○	○	○	○
Spindle displacement sensor of temperature compensation (IBAG)	×	×	×	○	○	×	○	○
Full enclosed iron box packaging	○	○	○	○	○	○	○	○
Warranty prolong 1 year	○	○	○	○	○	○	○	○

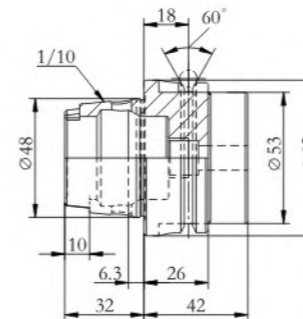
● Standard ○ Optional × Not available



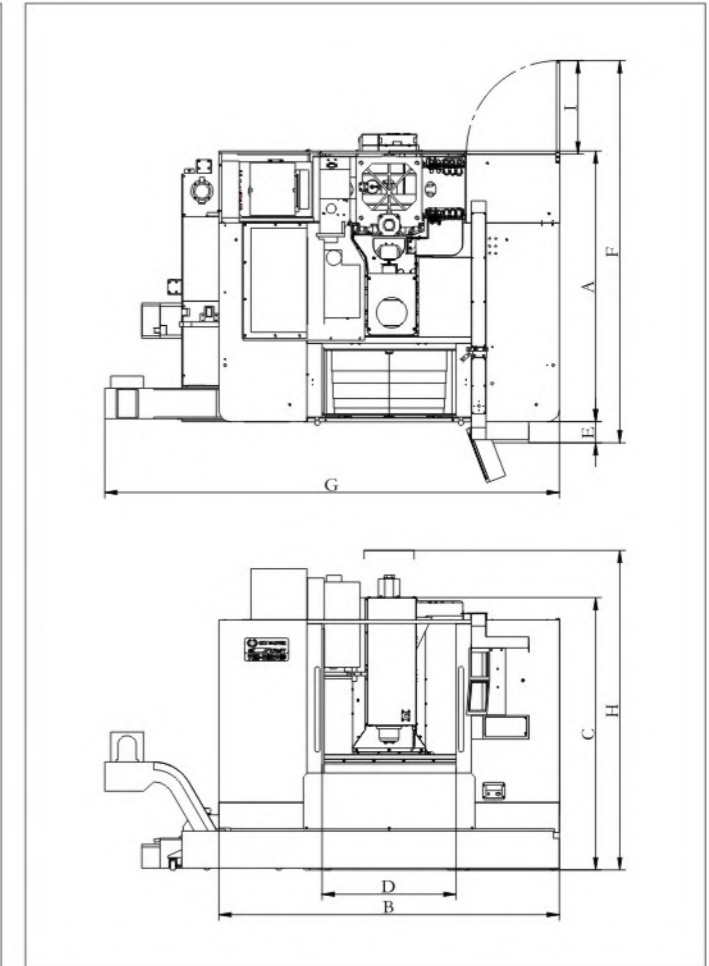
#### Dimensions

	A	B	C	D	E	F	G	H	I	J
VF1290/1290A/1290B	4776	4790	3215	4066	3906	3567	2270	1260	870	740
VF1615/1615A/1615B	5657	5403	3954	5052	4785	3650	3010	1430	870	650

We reserve the right to change technical parameter for improvement of our products without giving notice to customers.



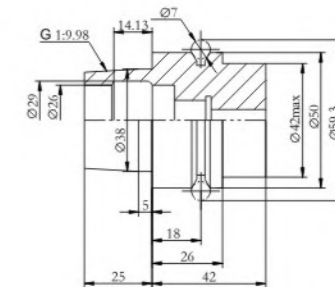
■ HSK-A63 Tool Shank



#### Dimensions

	A	B	C	D	E	F	G	H	I
VF68	1915	2180	2090	650	175	2955	3155	2590	865
VF108	2223	2794	2370	1100	180	3138	3730	2970	765

We reserve the right to change technical parameter for improvement of our products without giving notice to customers.



■ HSK E50 Tool Shank

# 03 Workshop & Equipment

Decades experience and Germany technology keep Sky Master always supplying reliable products.





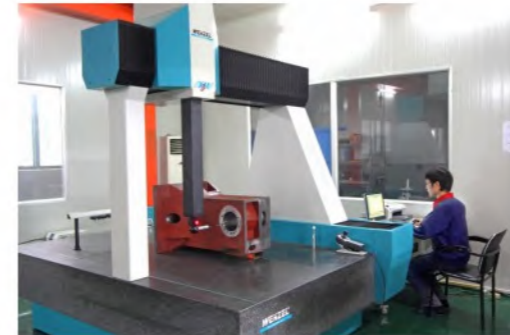
# 04 R&D, Inspection

- Sky Master work steadily in a spirit of responsibility for clients.
- Every machine is under strict quality control and inspection in order to keep the accuracy.
- We understand quality is essential to a company and more understand that product is important to the client.

Small steps make large distance



Quality! Control every detail always



Skilled scraping technology for linear and box series to improve the accuracy and stability.

# 05 Service

Use our wisdom to supply you the best solution



Union  
Efficiency



# 05.1 Trial Processing

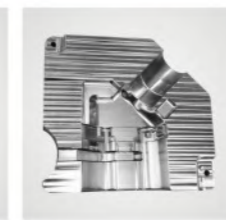
Supply the trial processing for clients



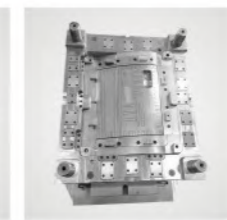
Benz testing sample



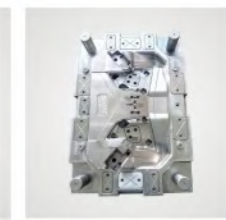
Round testing sample



Aluminum die casting mold



Auto interior decoration mold



Auto lamp mould



Auto lamp mould

## 06 Automation&Turn-key Project

According to Industry 4.0, automation is the inevitable trend, industry robot is the critical factor in Chinese industry 4.0 strategy. Following the marketing requirement, SKY MASTER and WELLLIH robot cooperate and design the VL1100 with automatic flexible machining system which can execute work-piece lift, clamping, position controlling, machining, inspection and all around function. It supply the whole solution for industry automation and upgrade the SKY MASTER machine at same time.



## 07 Customer Application

Gain the customers reliance and support by manufacturing with heart always

