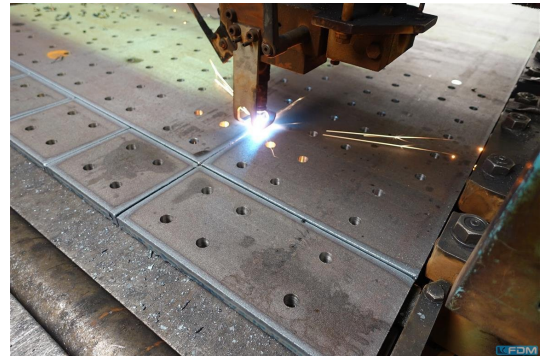


Sheet Metal Working Center

Stock number:	1130-0401-200022
Type of machinery:	Sheet Metal Working Center
Manufacturer:	Kaltenbach
Type:	WBZ 1500
Year:	1998
Control unit:	CNC
Maker of control unit:	Leukhardt
Country of origin:	Germany
Item location:	Cologne
Delivery time:	immediatly
Freight basis:	ex works incl. disassembling



Seller



nenok GmbH
 Wipperfurther Strasse 29 - 31
 51103 Köln

Phone: +49 2218888260
 Fax: +49 22188882626
 E-Mail: maschinen@nenok.de
www.nenok.de

Technical specs

plate thickness:	50 mm
drilling capacity diameter max.:	40 mm
drilling capacity diameter min.:	10 mm
drilling motor:	7,5 kW
burner type:	Oxyfuel cutting
hydraulic motor:	4,0 kW
weight of the machine ca.:	6,8 t
weight per piece max.:	1500 kg
table width:	1500 mm
table length:	6000 mm
Tool changer:	5-fach

Description

Kaltenbach WBZ 1500 sheet metal working centre - CNC controlled flame drilling system as used machine available at Nenok from Cologne

With the Kaltenbach sheet metal processing centre, the operator has a multi-functional plant for steel construction, steel trade and apparatus engineering. With this CNC-controlled plant you achieve a high degree of flexibility and efficiency for your sheet metal production.

With the WBZ 1500 flat steel processing centre, a large number of work steps can be carried out in one system by one machine operator: Drilling, countersinking, threading and flame cutting of sheet metal, sheet metal strips and flat steel. The production of head plates, foot plates and gusset plates becomes cost-effective and economical with this sheet metal processing centre.

The Kaltenbach WBZ 1500 functions as follows: First, the contour data is read into the CNC control manually or by transferring CAD data in DSTV format. The control takes the generated data and converts them into machine commands so that the positioning axes can move to the desired drilling or torch positions. Afterwards the sheet metal plates or flat steel are placed in their initial length on the infeed roller table. The length measuring device consisting of a pushing and pulling gripper carriage with hydraulic collet chuck then positions the workpiece (the plate) first for the drilling process and then under the burner unit to burn out the component in the desired shape. Then the almost finished components are usually deburred or marked by the machine operator directly next to the machine and prepared for production.

Technical description of the WBZ 1500:

The panel width must be at least 100 mm and at most 1,500 mm. The panel thickness is at least 8 mm and at most 50 mm. The plate must have a minimum length of 500 mm and may be no longer than 6,000 mm. The maximum unit weight is 1,500 kg.

A 6.3 m infeed roller conveyor with measuring carriage is included. There are 15 rolls with a roll diameter of 110 mm and a roll width of 1550 mm. There are 8 vertical guide rollers. The cut-off table has a length of 2000 mm with 11 rolls, a roll diameter of 98 mm and a roll width of 1550

Sheet Metal Working Center

mm. Optionally 4 cross tractors with chain towing system for the infeed side are available.

The Kaltenbach WBZ 1500 has a tool changer with 5 tool positions. The drilling unit is suitable for HSS cooling channel drills, which can be purchased from Nenok. Drill bits with a diameter of 10-40 mm can be used on the machine. There are 7 spindle speeds, which are frequency controlled from 100-600 rpm. The spindle stroke is 350 mm. The rapid feed and return is 5000 or 8000 mm/min. The drill feed is between 0-200 mm/min. The feed force is max. 20 kN. The torque is max. 300 Nm.

The drill motor has a drive power of 7,5 kW. The positioning drive of the spindle and the measuring carriage has a power of 2.8 kW each. The hydraulic motor requires 4.0 kW drive power.

The working height is 640 mm.

The system dimensions are: 13,500 mm long, 3700 mm wide and 3000 mm high. The weight of the system without accessories is 6800 kg.

The Kaltenbach WBZ 1500 is equipped with an oxy-fuel burner.

On request, Nenok can provide professional dismantling and assembly as well as machine service and spare parts for ongoing operation.